

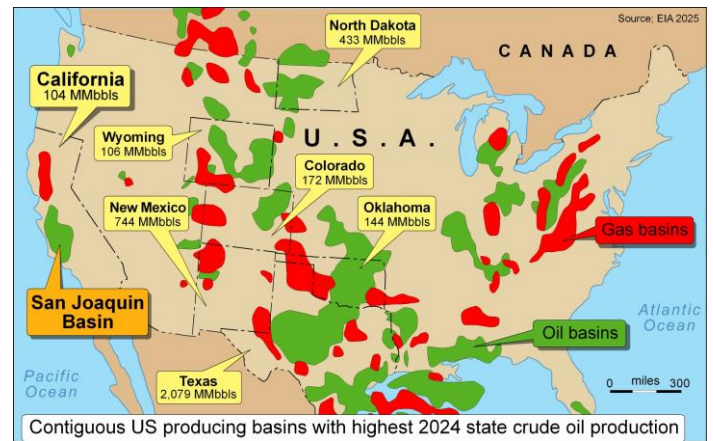
Onshore California

Ten Section Field, San Joaquin Basin

- **Early entry opportunity to earn into producing Ten Section field by participation in enhanced development infill drilling**
- **4.1 MMstb produced to date from est. 23.1 MMstb resource within CPG's acreage and additional 2.1 MMstb now estimated capable of being exploited by new wells with 10 acre spacing**
- **1st of 10 new infill wells planned for 2026 est. likely to cost US\$ 2.7 million completed**
- **Low Risk & fast payback with 12 month break-even at est. 185 bopd per new well with initial well production funding progressive infill wells**
- **Acreage surrounded by existing infrastructure with all necessary local oilfield services**

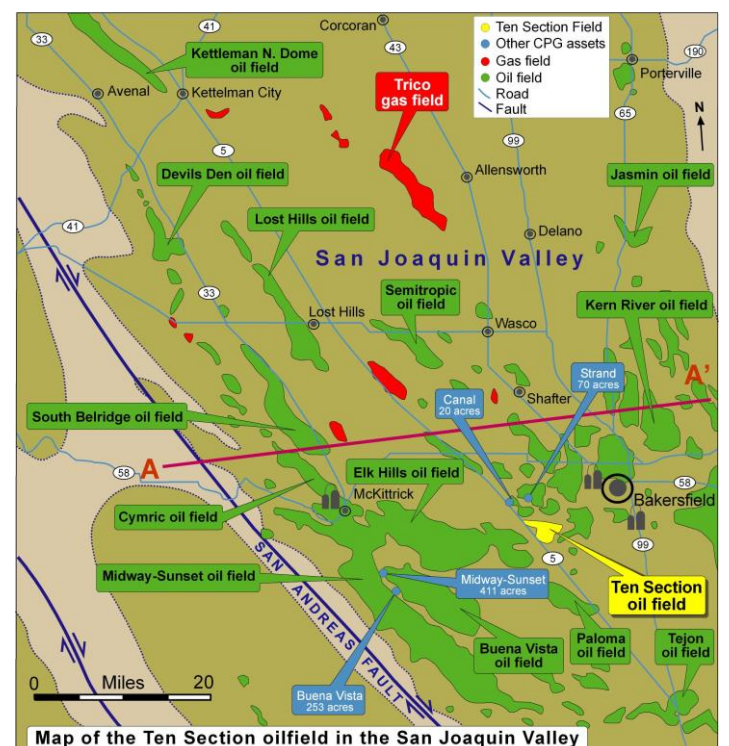


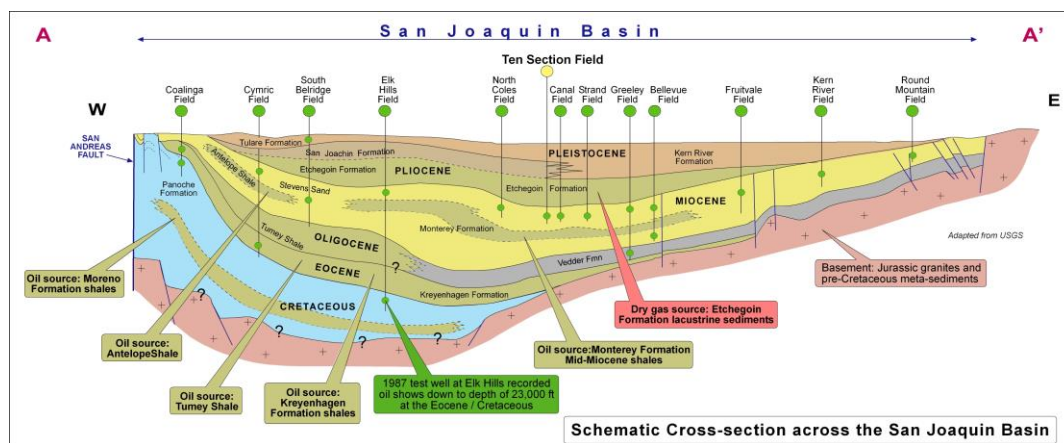
Introduction: Envoi has been engaged by California-based California Petroleum Group ("CPG"), to assist in their search for a partner to join in the development of their 100% owned and operated **Ten Section leases**. CPG's Ten Section leases are situated in Kern County, on the west side of the San Joaquin Basin some 12 miles SW of Bakersfield. The area has well-established production with over 60,000 producing wells that makes Kern County one of the most productive areas in the whole of California. The state as a whole produced over 104 million bbls in 2024, making it the eighth largest producer of crude oil in the US out of its 32 oil-producing US states. CPG, which is owned and managed by experienced oil industry executives, has interests in a number of leases across Kern County. These include its northern Ten Section leases, in which it is inviting parties to earn a material interest in return for funding the first well (estimated cost US\$ 2.7 million gross) of a 10 well infill drilling programme.



the original wells which were drilled on a 20 acre spacing. This is designed to increase and maximise recovery from the northern part of the Ten Field closure in CPG's leases with the first well, CPG #1, now deemed as 'ready to drill'.

Exploration History: The southern part of the Ten Section Field was originally discovered in June 1936 at Stevens Siding. It was not only the first field in the state discovered using seismic data, but also the first on the Valley floor to achieve production. The Ten Section oil accumulation is a 34° API light oil pool in a low relief elongated anticlinal dome with subtle 7° dipping flanks, but a productive closure of approximately 2,200 acres. The field has been produced by solution gas and a weak edge aquifer drive. Historical production has totalled 85.3 MMstb from around 225 historical wells drilled across the whole field. The northern area, where CPG operates its leases, was discovered and developed much later in 1965 by Standard Oil, with 15 wells drilled in quick succession. CPG acquired 100% its current leases in 2019 over this northwest area of the field and has since carried out a full geological and engineering analysis, supplemented with new data acquisition and workover programmes on existing wells. Currently, 2 wells are producing around 25 bopd from the existing wells in their Ten Section leases. CPG now wishes to carry out a 10 well infill development drilling programme with a smaller 10 acre spacing infilling the space between





Resource Potential: The existing wells only cover 280 acres of the mapped closure in CPG’s acreage, which were drilled with a 20 acre well spacing. Within their acreage, the original oil in place is estimated to have been 23.3 MMstb with an 18% recovery to date and any water reinjected into a dedicated a SWD well. CPG now estimates that by drilling new wells with a 10 acre spacing, the oil

Petroleum Geology: The San Joaquin Basin is an asymmetric, originally Mesozoic-age subduction-related basin, bounded to the East by the Sierra Nevada and the West by the Coast Ranges. In the Cenozoic, it was an inland sea, adjacent to the developing San Andreas right-lateral strike-slip fault. Today it is a continental basin with over 6 miles of sediment thickness, which contains highly productive plays and a very large number of oil and gas fields.

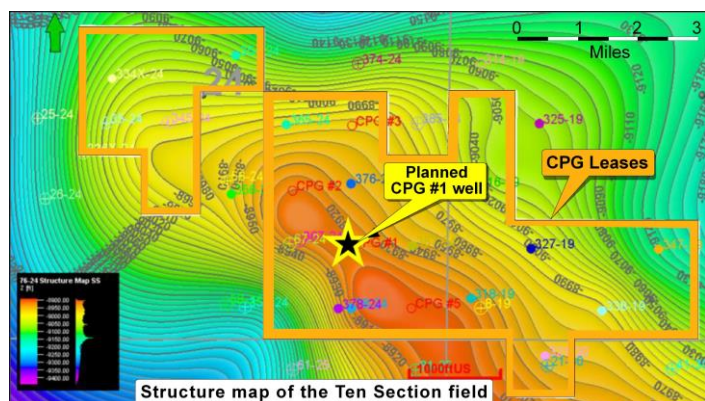
The proven reservoirs comprise mainly of Upper Miocene-aged turbidites known as the Stevens Sand, sealed by overlying shale beds. These are a prolific producer over the basin, with up to 80 million bbls produced from them to date. They contain thin, irregular shale and siltstone streaks which vary considerably in stratigraphic position and thickness and can therefore be discontinuous. As a result, although individual sands and shales are distinct throughout the field, they cannot be easily correlated over a wide area, making it difficult to subdivide the sand body into separate distinct zones. That said, fairly persistent siltstone bodies appear to divide the productive reservoir units into three general reservoir sand zones, the Canal Sand, the 53-30 Sand and the 76-24 Sand which are produced in the Ten Section Field. These each have their own pressure regime and fluid contacts. The reservoirs are predominantly alternating tight, indurated carbonate-controlled sandstone and friable, argillaceous, poorly consolidated sandstone.

recovery can be increased by 9% which could add 2.1 MMstb to the recoverable reserves of the field in their acreage.

Commercial Overview: The threshold economics show a project EBITDA US\$ 56.8 million and NPV10 of US\$ 28.3 million, if just one well is funded and then cash flow reinvested in the next nine well infill drilling programme. The oil is sold by trucking. In addition to the well cost of US\$2.7 million (D&C), the facilities add US\$0.1 million and US\$ 70k ABEX per well. CPG’s existing experience in California ensures it is well-placed to profitably navigate the states’ petroleum legal and permitting processes.

Work Programme: CPG owns and operates the wells in its leases and is in the process of applying for permits to commence infill drilling in the Ten Field leases. CPG is planning to drill its first new development well in ~Q3 2026 with an estimated cost US\$2.7 million drilled and completed with a turnkey contract.

The Opportunity: CPG is offering a material interest to a party in return for funding the planned initial well, where the expected cash flow from the estimated 185 bopd production per well is estimated capable of producing will then be reinvested to progressively drill up to 9 additional infill wells. The intention is for CPG to fund its own share of subsequent wells. There is also potential to acquire additional leases in the area as the development cash flow builds after the development drilling programme payback.



The Ten Section structure has a productive closure of only some 350 feet, but with no faulting. Reservoir pressures of between 2,700 to 3,700 psi have been measured. Upside is mapped in proven shallow gas reservoirs and deeper stacked-pay oil reservoirs.

Further Information: Access to the key data on this opportunity is available online after execution of a Confidentiality Agreement (CA). Serious parties will be invited for a presentation, which can be made remotely, followed by access to the full data set, including the available workstation data. Physical data rooms can also be visited in CPG’s office in California, or at Envoi’s office in London. All expressions of interest and requests for more information, including a copy of the CA, should be made exclusively through Envoi.

Contact: Mike Lakin
 Envoi Limited, Old Stables House, 1d Manor Road,
 London, W13 0LH, United Kingdom
 T: +44 (0)20 8566 1310
 E: deliver@envoi.co.uk
 I: www.envoi.co.uk

